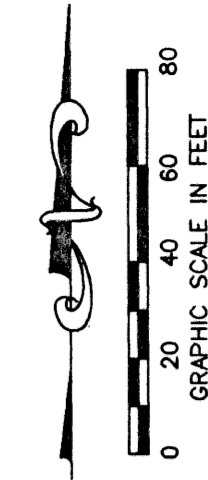


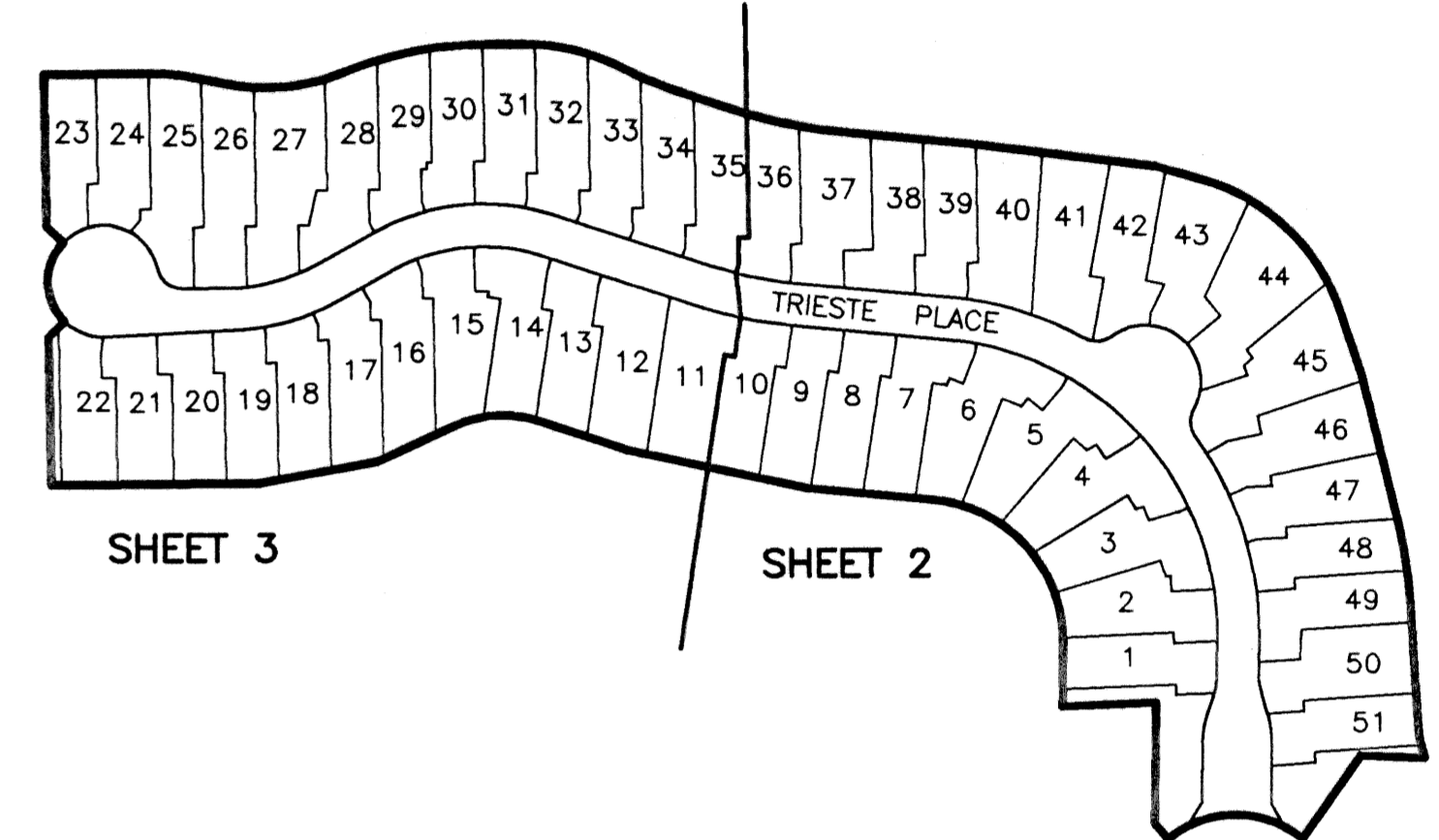
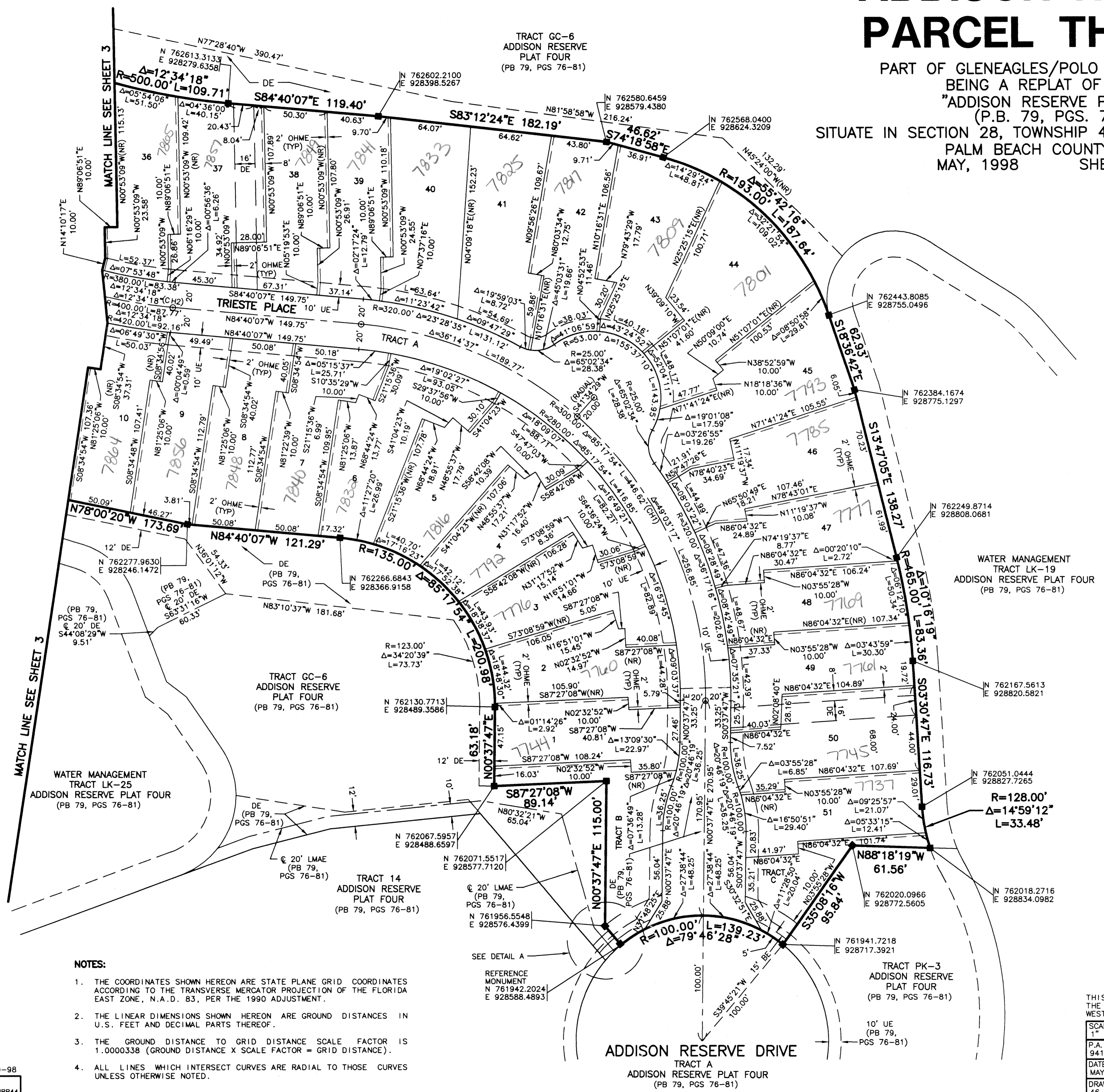
ADDISON RESERVE PARCEL THIRTEEN

PART OF GLENEAGLES/POLO CLUB WEST P.U.D.
BEING A REPLAT OF TRACT 13
"ADDISON RESERVE PLAT FOUR"
(P.B. 79, PGS. 76-81)
SITUATE IN SECTION 28, TOWNSHIP 46 SOUTH, RANGE 42 EAST
PALM BEACH COUNTY, FLORIDA
MAY, 1998 SHEET 2 OF 3

STATE OF FLORIDA
COUNTY OF PALM BEACH
THIS PLAT WAS FILED FOR
RECORD _____ DAY OF
MAY, 1998 AND DULY RECORDED
IN PLAT BOOK _____ ON PAGES
_____ AND _____
DOROTHY H. WILKEN, CLERK
BY: _____, D.C.



CIRCUIT COURT SEAL



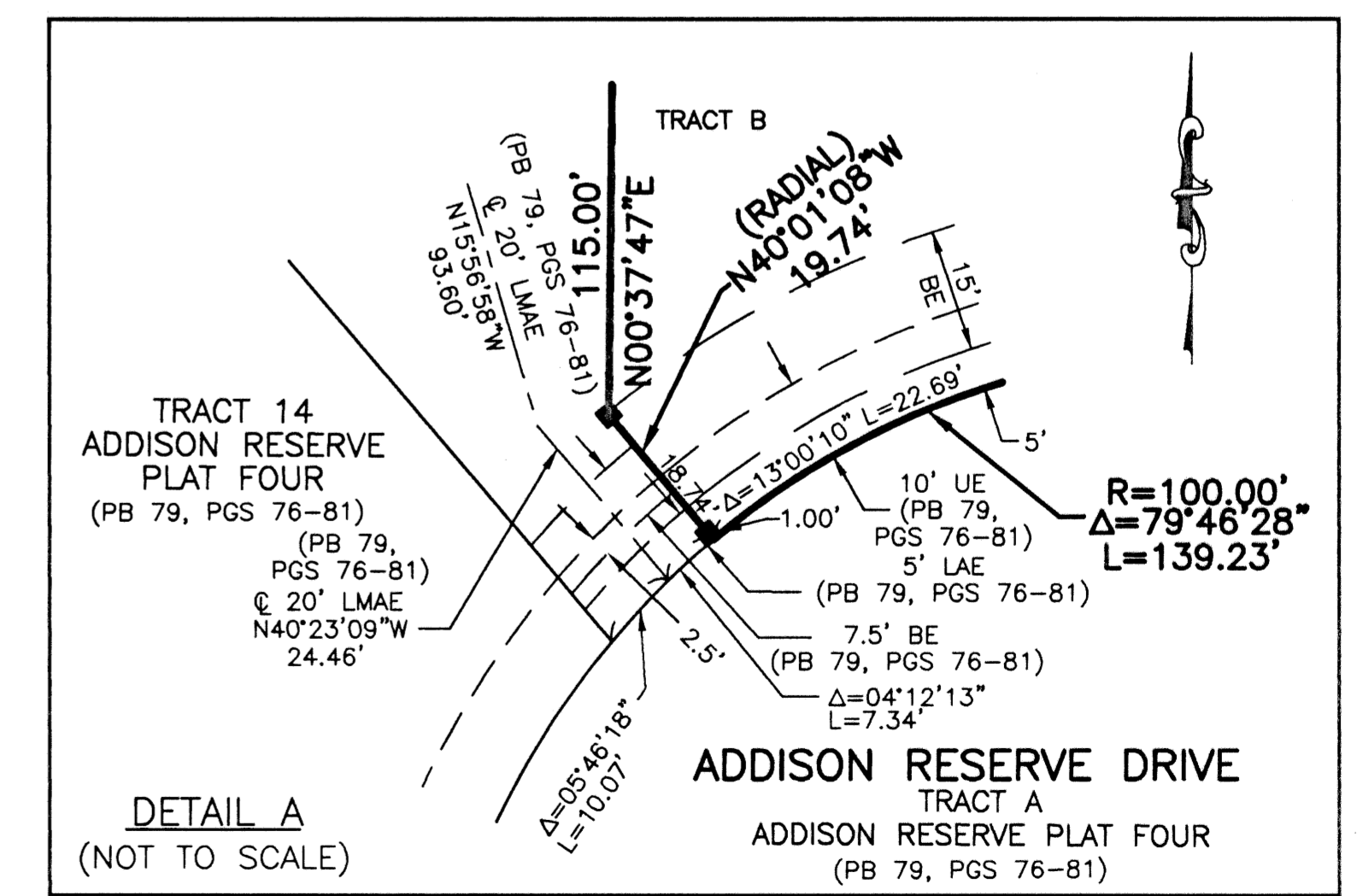
SHEET LOCATION MAP
NOT TO SCALE

LEGEND

- BE BUFFER EASEMENT
- Δ CENTRAL (DELTA) ANGLE
- CH CHORD
- DE DRAINAGE EASEMENT
- FPL FLORIDA POWER & LIGHT
- LAE LIMITED ACCESS EASEMENT
- LE LANDSCAPE EASEMENT
- LME LAKE MAINTENANCE EASEMENT
- LMAE LAKE MAINTENANCE ACCESS EASEMENT
- LWDD LAKE WORTH DRAINAGE DISTRICT
- (NR) NON-RADIAL
- OHME OVERHANG AND MAINTENANCE EASEMENT
- ORB OFFICIAL RECORD BOOK
- PB PLAT BOOK
- PG(S) PAGE(S)
- PUD PLANNED UNIT DEVELOPMENT
- R RADIUS
- (TYP) TYPICAL
- UE UTILITY EASEMENT
- PERMANENT REFERENCE MONUMENT
- FOUND PLS# 4763
- PERMANENT REFERENCE MONUMENT
- SET PLS# 4763
- PERMANENT CONTROL POINT
- SET PLS# 4763
- ⊕ CENTERLINE

CHORD TABLE

CH#	BEARING	DISTANCE
1	N42°01'10"W	406.50'
2	N78°22'58"W	87.59'



DETAIL A
(NOT TO SCALE)

NOTES:

- THE COORDINATES SHOWN HEREON ARE STATE PLANE GRID COORDINATES ACCORDING TO THE TRANSVERSE MERCATOR PROJECTION OF THE FLORIDA EAST ZONE, N.A.D. 83, PER THE 1990 ADJUSTMENT.
- THE LINEAR DIMENSIONS SHOWN HEREON ARE GROUND DISTANCES IN U.S. FEET AND DECIMAL PARTS THEREOF.
- THE GROUND DISTANCE TO GRID DISTANCE SCALE FACTOR IS 1.0000338 (GROUND DISTANCE X SCALE FACTOR = GRID DISTANCE).
- ALL LINES WHICH INTERSECT CURVES ARE RADIAL TO THOSE CURVES UNLESS OTHERWISE NOTED.

THIS INSTRUMENT WAS PREPARED BY MARY HANNA CLODFELTER, P.S.M. IN THE OFFICES OF MOCK, ROOS & ASSOCIATES, INC., 5720 CORPORATE WAY, WEST PALM BEACH, FLORIDA 33407.

SHEET 2 OF 3

SCALE:
1" = 40'
P.A. NO.:
94182.13
DATE:
MAY, 1998
DRAWING NO.
46-42-28-165

MOCK • ROOS
ENGINEERS • SURVEYORS • PLANNERS

5720 Corporate Way, West Palm Beach, Florida 33407
(561) 863-3113, fax 478-7248

**ADDISON RESERVE
PARCEL THIRTEEN**

PART OF GLENEAGLES/POLO CLUB WEST P.U.D.
BEING A REPLAT OF TRACT 13
"ADDISON RESERVE PLAT FOUR"
(P.B. 79, PGS. 76-81)
SITUATE IN SECTION 28, TOWNSHIP 46 SOUTH, RANGE 42 EAST
PALM BEACH COUNTY, FLORIDA

ADDISON RESERVE
PARCEL 13
PAGE 161
FLOOD MAP # 215A
ZONING RT515E
QUAD # 5A
SE 20-215
TAG 478
FID NAME: Addison Reserve

REV.: 08-20-98
CAD FILE:
C:\MKCAD\ADDIRP44